

# Oostwold Airshow 2017



**Briefing for  
visiting aircraft  
4<sup>th</sup> and 5<sup>th</sup> June  
2017**



## Dear pilots

This document deals with procedures to be employed during the Oostwold Airshow days on **June 4<sup>th</sup> and 5<sup>th</sup>** 2017 only.

The following procedures have been devised in an attempt to ensure primarily the safety of participants and also create an orderly flow of traffic, both in the air and on the ground. However, the pilot in command remains responsible at all times both in the air and on the ground operating under safe practice in accordance with the privileges of his/her license. Visitors should read these procedures carefully and study in detail before departure from their home aerodrome. Oostwold Airport and its employees accept no liability whatsoever for any damage injury, incident or accident whilst following these procedures, nor for any legal action resulting from doing so. These procedures will be in force from 0900 till 1900 local time, except during the airshow itself.

**For all, keep it safe, maintain at all time a good lookout, separation and listening watch on the appropriate frequencies.**

On behalf of the Oostwold tower crew we wish you a nice flight to and from Oostwold, hopefully under CAVOK conditions, and a pleasant stay at Oostwold.

## METEO

There are no official Met observations at Oostwold. There is a link from the towers Davis Weather Monitor to the Oostwold Airport website which provides the surface wind, outside air temperature, dew point, humidity, and local QNH. This is updated every 5 min and can be seen at

<http://www.oostwold-airport.nl/nl/vliegerinformatie/weerbulletin.html>

METAR and TAF information of nearby airport EHGG is a good reference, as well is the ATIS information of EHGG, available via **133.555** MHz.

## Flying Inbound

Plan your flight to land as close as possible to comply with your slot time (which is local time), although all aircraft will be given a 5 minute plus or minus leeway on their allocated slot time.

**Your slot time is the time that you are expected to arrive at IP Sierra.**

Aircraft flying in or underneath the Eelde TMA are encouraged to request a *flight information service* from Eelde Approach (**120.305**) (both for the inbound flight as for the outbound flight).

Particular care should be taken to avoid controlled or restricted airspace, particularly that of **Eelde CTR** and the **Veendam ATZ**.

## How to fly to Oostwold:

1. All inbound flights will proceed to Initial point **▲IP SIERRA<sup>1</sup>**
2. CONTACT Oostwold RADIO (**118.325**) at least 5 minutes before reaching **▲IP SIERRA**. Report your flight details and slot time to Oostwold RADIO. After exchanging the relevant information Oostwold RADIO will hand you over to Oostwold INFO (**126.800**), change frequency immediately.
3. MONITOR (so do not call yet) immediately after selecting the Oostwold INFO frequency (**126.800**) on your way to **▲SIERRA**, have a sharp look out for traffic for other traffic inbound Sierra.
4. After passing Sierra proceed to **▲WHISKY** (for runway 25) or **▲ECHO** (for runway 07) at 1000 ft. MSL and adjust your aircraft to 'downwind configuration' and reduce to downwind speed.
5. REPORT passing **▲WHISKY** or **▲ECHO** and start your descent to circuit altitude 700 ft. MSL. and proceed to downwind.
6. Do not turn in too close behind your preceding aircraft to final, especially for runway 25 where a backtrack portion is very likely.
7. REPORT **FINAL**.
8. **Landing:**
  - a. **RWY07**: Prepare for a normal landing and aim to vacate the runway via BRAVO, in case you missed BRAVO keep up a good taxi speed until vacating the runway at the end via ALPHA.
  - b. **RWY25**: Prepare for a short (but safe) field landing to vacate the runway via BRAVO aim to keep the backtrack portion as short as possible.
  - c. In case of a **GO AROUND**: climb to 500 ft. MSL max. until passing abeam **▲WHISKY** or **▲ECHO**, thereafter climb to 700', meanwhile contact Oostwold INFO for rejoining advise.
9. **Parking**: Enter the parking area via taxiway BRAVO (or ALPHA), taxi with extreme caution to other aircraft and people in the maneuvering area. Follow the marshalls instructions and do not make further radio calls, except in case of urgency/emergency. Shut down your engine(s) as soon as possible. To put it once clear: you are to comply with all signals so given **except** where you consider that to do so would jeopardise the safety of the aircraft or of its passengers or of persons or property on the ground.
10. If you need to contact ATC after landing or parking, contact Oostwold RADIO 118.325.
11. Refueling is only possible after the show.

## Ground transport

1. Keep all the things you will need during your visit with you, you will not return to your aircraft during the show.
2. All crew and passengers will be transported to the gate.
3. Take a print of your slot time and ticket reservations with you and hand this over to the Aircrew Reception staff.

---

<sup>1</sup> IP Sierra      53° 8' 49.6"N 007° 4' 44.2"E (East Winschoten, Crossing railroad/ A7)

## After the show

Report at the aircrew gate for transport to your aircraft.  
NO start up will be granted as long as the airshow is in progress!

1. Request **start-up** approval from Oostwold RADIO (**118.325**)
2. In case you have filed a **flight plan** report this during your start-up request.
3. After start-up start squawking 7000 and taxi carefully and with respect to the other aircraft to the assigned exit (RWY25: ALPHA or RWY07: BRAVO midfield intersection). *In case of RWY07: have your checks done, before entering the runway for backtrack to the beginning of RWY07.*
  - a. In case you first want to proceed to the **fuel station**: Please display a letter **F** in the windscreen when taxiing to the fuel station (at the end of TWY A) to enable the marshallers to direct your aircraft appropriately. *(Print or draw a letter "F" as large and bold as possible on a A4 sized paper).*
4. Be ready for departure upon reaching the exit to the runway, when FIRST in position at the exit CONTACT Oostwold INFO (**126.800**). And REPORT 'ready for departure' to Oostwold INFO. **Do not enter the runway without permission from INFO!**
5. After takeoff fly for at least 1 minute on runway heading, then leave the area the shortest way and resume your navigation. In any way, stay at least 2NM away from EHOW.
6. Contact Eelde Approach (**120.305**) for *flight information* when clear of the area.
7. Again: special attention should be paid to avoiding the Eelde CTR and the Veendam ATZ (SE from Eelde).
8. Fly safely to your home base!

## Nice or need to know's:

1. After parking you will be picked up by cars for transportation to the entrance gate,
2. NO walking is allowed in the parking area!
3. Refueling is only possible after the show, cash or PIN only (no carnets). Jet A1 and 100LL fuel is available.
4. A tow bar might be useful for better positioning after parking.
5. The pilot in command is responsible for their passengers.
6. Phone number **Oostwold TWR: +31 597 551201**
7. Phone number **Oostwold Operations: +31 597 551490**

## Frequencies:

Oostwold RADIO	118.325	Initial call approaching IP West or IP Sierra Start Up and during taxiing/ parking
Oostwold INFO	126.800	All traffic on the runway, in the circuit
Eelde Approach	120.305	Flight information in/below the Eelde TMA
Eelde Tower	118.705	CTR Eelde crossing/entering
Eelde ATIS	133.555	Meteo information EHGG: wind, clouds and QNH

# Airport diagram

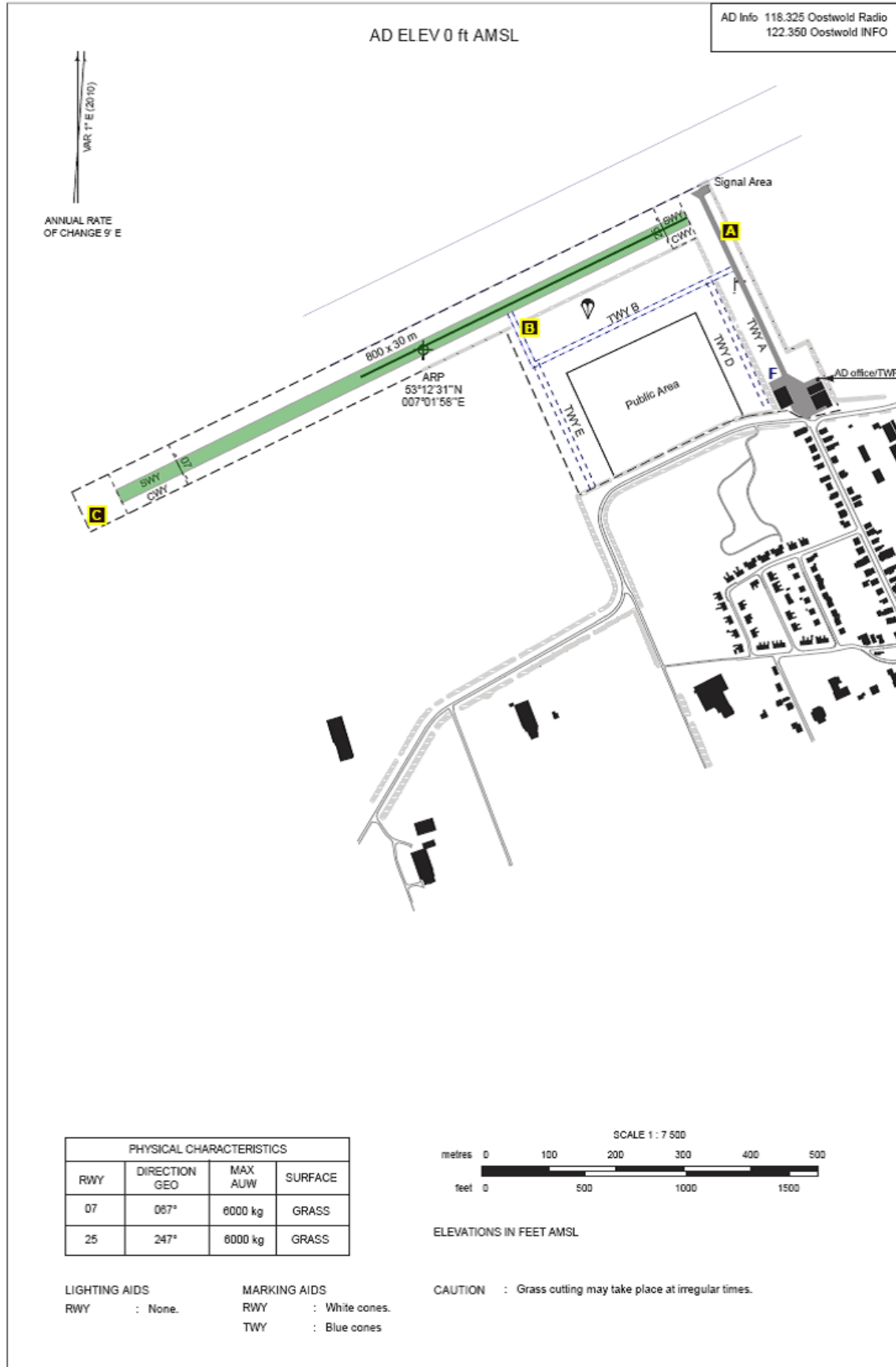
AIP NETHERLANDS

OOSTWOLD/Oostwold  
AERODROME CHART

AD 2.EHOW-ADC  
Only valid on: 25 MAY 2015

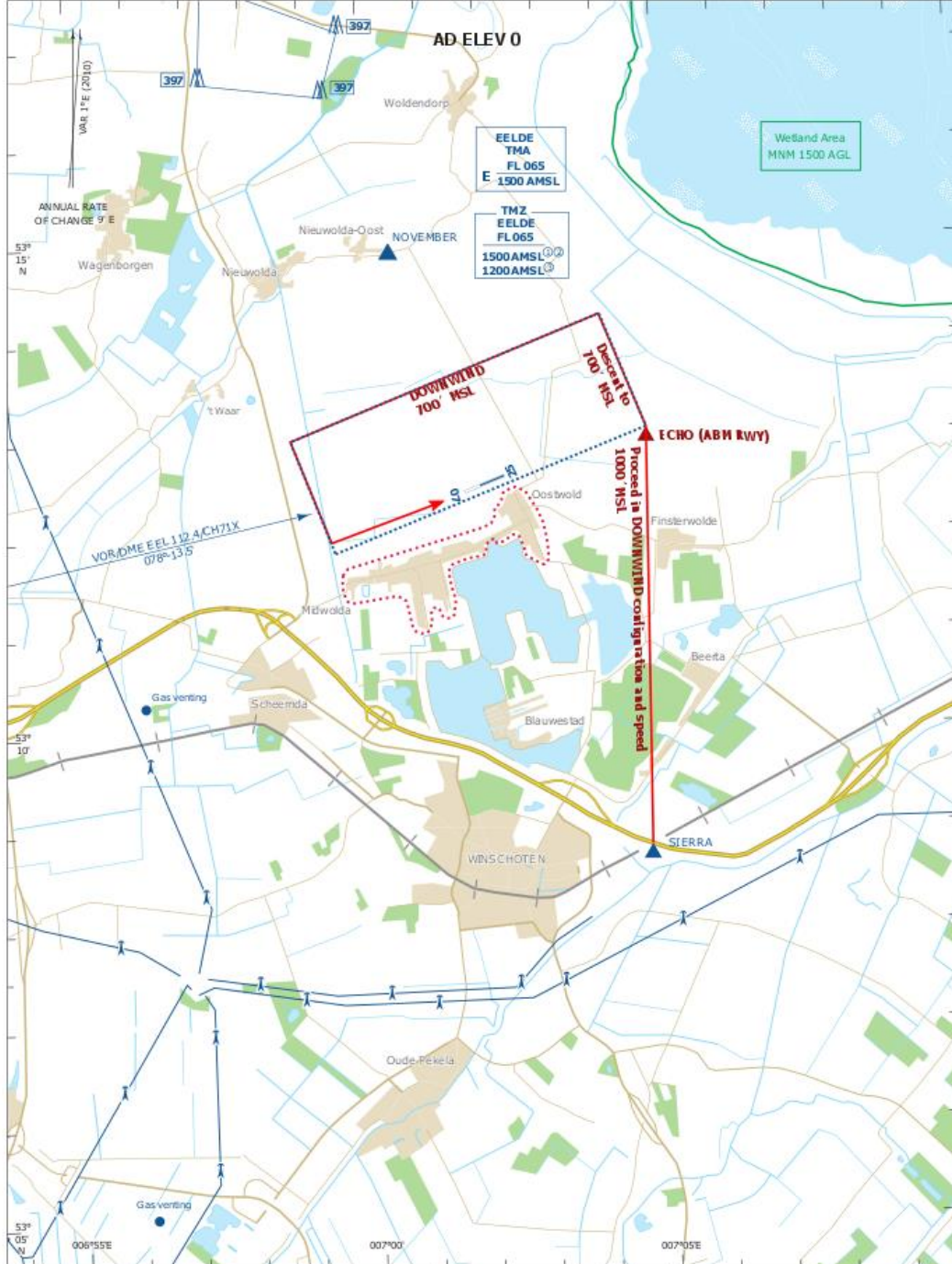
AD ELEV 0 ft AMSL

AD Info 118.325 Oostwold Radio  
122.350 Oostwold INFO



# Arrival RWY07

OOSTWOLD/Oostwold  
 VISUAL APPROACH CHART/VFR ARRIVAL RWY 07  
 Edition 2017



**For description VFR - procedures see EHOW AD 2.22**

**TMZ**  
 ① MON-FRI before 0800 (0700) and after 1600 (1500), SAT, SUN and HOL.  
 ② MON-FRI 0800-1600 (0700-1500), EXC HOL: lower limit for non-motorised hanggliders and paragliders.  
 ③ MON-FRI 0800-1600 (0700-1500), EXC HOL: lower limit 1200 ft AMSL.

Area to be avoided below 1000'

BEARINGS ARE MAGNETIC  
 DISTANCES IN NM  
 ALTITUDES AND ELEVATIONS  
 IN FEET AMSL  
 HIGHEST KNOWN ELEVATION  
 ON THE CHART: **397**

AD Info 118.325 Oostwold Radio  
 126.800 Oostwold INFO  
 APP 120.305 Eelde Approach  
 TWR 118.705 Eelde Tower

SCALE 1 : 100 000

km 0 3 6  
 NM 0 2 4



# Arrival RWY25

